

Supplier

■ Hong Kong Office Asia Building Materials Limited

Suites 1201-4, Tower 2 The Gateway,
25-27 Canton Road TST, Kowloon
Hong Kong

Tel: (852) 3105-3221

Fax: (852) 3105-3611

<http://www.asiabm.com>

info@asiabm.com

■ Shanghai Office Asia Building Materials Consultancy (Shanghai) Co., Ltd.

Rm. 407, Dong Ping Building,
No. 15 Dong Ping Road
Shanghai, China
Postal Code: 200031

Tel: (86) 21 6433-1695

Fax: (86) 21 6433-3785

US Agent

■ Jerry Huber & Associates, Inc

4608 Groundnut Court
Raleigh, North Carolina 27613
USA

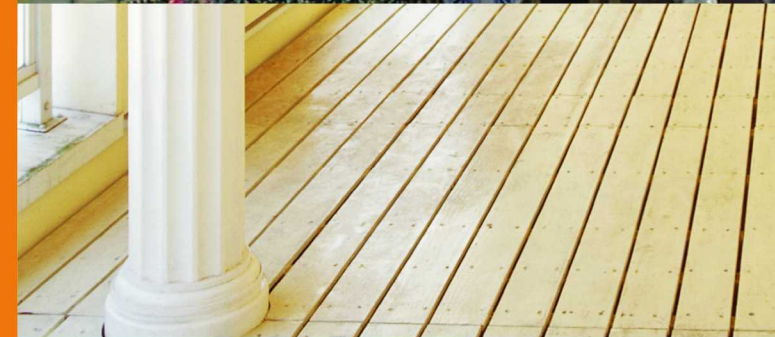
Tel: (1) 919-781-9674

Fax: (1) 919-781-9752

Contact Person:

Mr. Jerry Huber

Email: jhuberassocs@nc.rr.com



Century Trim™



Asia Building Materials

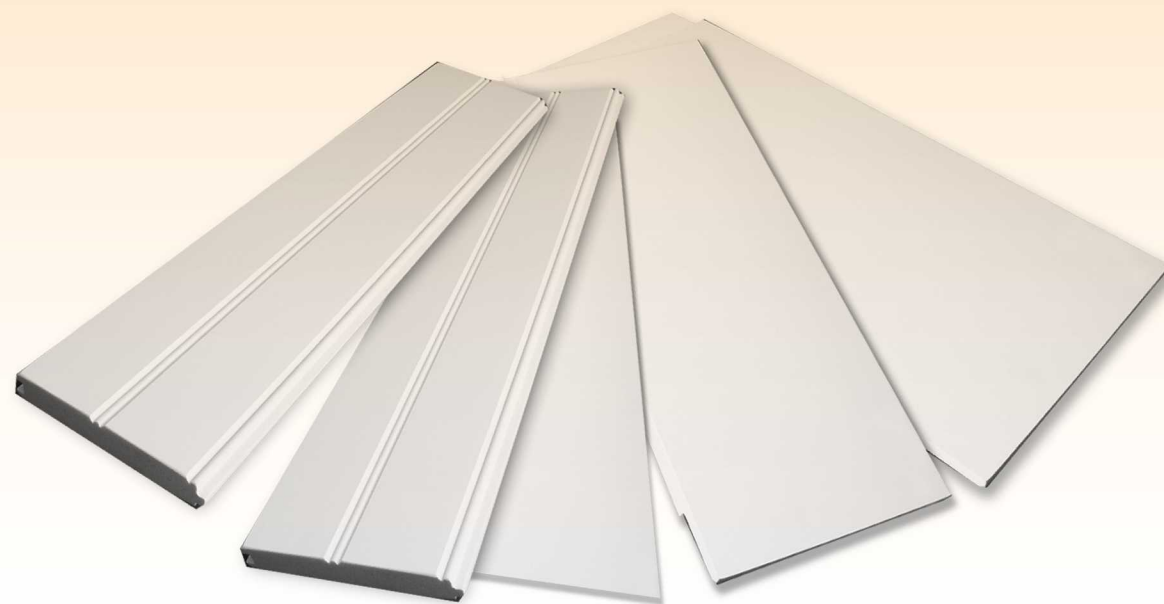


Century Trim™

CPVC (Cellular Polyvinyl Chloride) Products

Imagine intricate interior and exterior trim, beaded ceiling and profiles that keep their shape, require very little maintenance and never need painting - unless you wish to color match with other millwork, windows, doors and siding.

Century Trim™ CPVC is manufactured by using a heated free foam extrusion process which creates tiny air bubbles within the shape, resulting in a density less than half that of solid PVC. When cooled after extrusion, the material forms a smooth, hard surface that resists dents and scratches.



Century Trim™

CELLULAR STYRENE POLYMER WMI80 Brick Mould

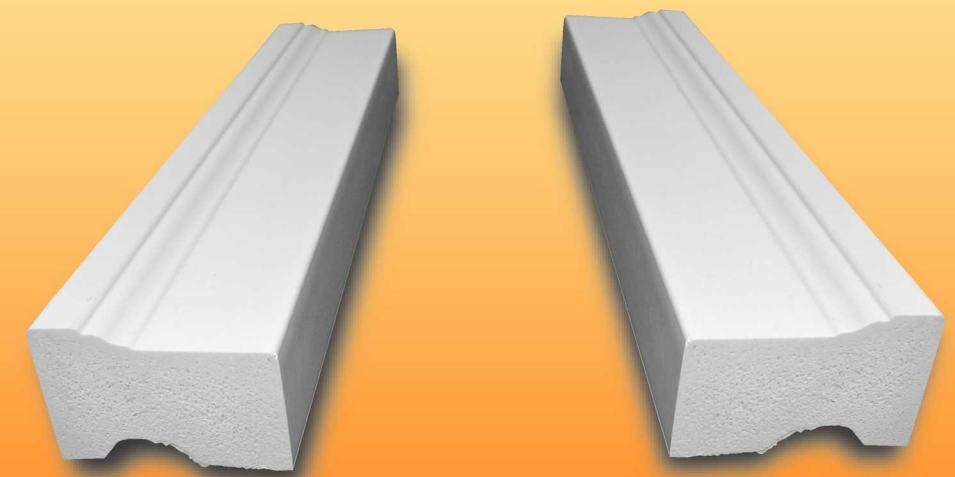
Pre-finished White Cellular Core Styrene Polymer
UV Inhibitors Added

The Economical Alternative to Wood & PVC Brick Mould
Waterproof, Rot & Insect Resistant

Easy to Cut, Staple, Screw or Nail - Pre-drilling not Required

Can be Painted any Color - No Special Preparation Required

Light Weight - Stiff like Wood



Standard Lengths: 7', 8', 10', 14', 16', 17' & 18'

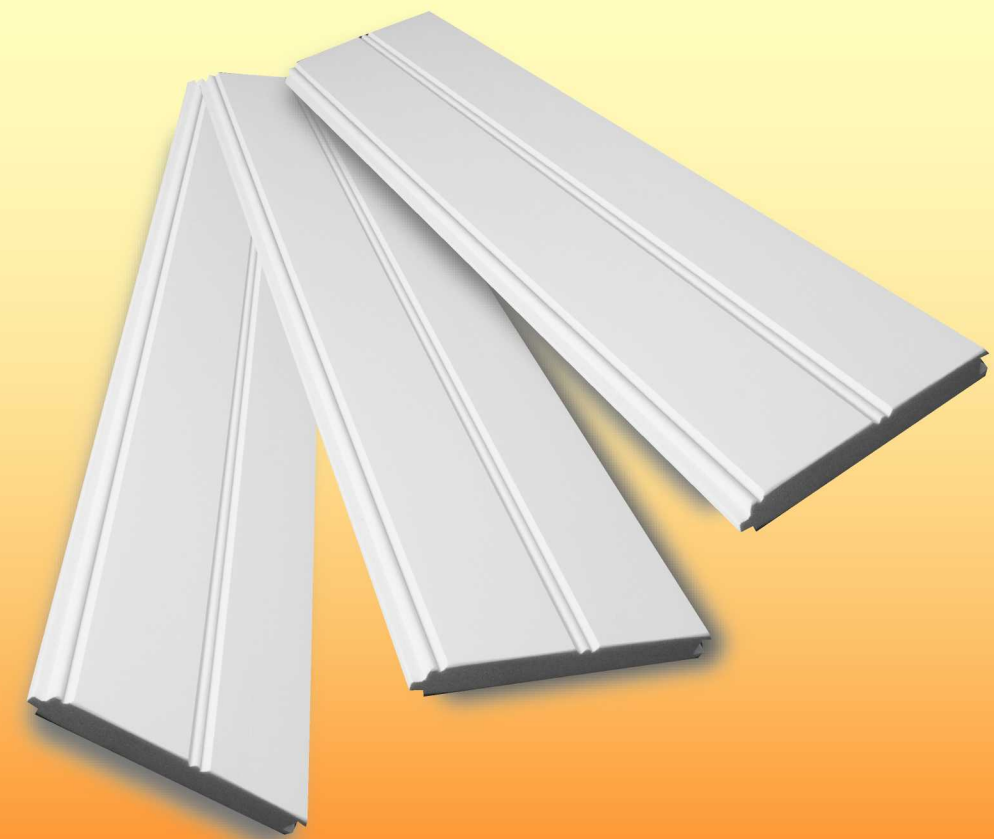
Other Lengths Available

Pre-cut & Mitered Sets

To Customer Specifications

CPVC (Cellular Polyvinyl Chloride)
Products Offered – Matt White

Century Trim™



Trim Boards – Standard ALS Widths – Smooth 4 Sides or Woodgrain 1 Face

- 1 x 4 x 18'
- 1 x 5 x 18'
- 1 x 6 x 18'
- 1 x 8 x 18'
- 1 x 10 x 18'
- 1 x 12 x 18'

Ship Lap or Square Cut Ends

Other Thickness, Widths, Pattern Stock, Profiles and Lengths as Specified by Customer

T&G Beaded Ceiling – EB&CB/V2E

- 1 x 4 (9/16" x 3 1/4") x 18'
- 1 x 6 (1/2" x 5 1/2") x 18' (Also available in 23/32")
- Weight: 1 x 4 beaded ceiling – approximately 1188lbs/MBM
- Weight: 1 x 6 beaded ceiling – approximately 1195lbs/MBM

Sheets/Panels – Smooth 4 Sides or Woodgrain 1 Face

- Available – 23/32" Thick – Up to 48" Wide and up to 20' Long
- Weight: Boards – between 1625lbs and 1775lbs/MBM

Production Process



Advantages of Century Trim™ CPVC Trim Boards and Beaded Ceiling

- Rot and Decay Proof
- Insect and Termite Proof
- Water and Moisture Proof - May be Installed Above or Below Grade
- Dent and Scratch Resistant
- Easy to Cut, Rip, Route, Screw, Staple and Nail
- Very Low Maintenance
- Strong and Durable

Storage & Handling

Century Trim™ CPVC products are flexible and tend to conform to the surface on which they are stored. Storage on flat level surface is recommended. Handle with care to avoid damage.

Application

Century Trim™ products should not be used in structural applications. They should only be used in non-load bearing situations.

Installation

All types of saws may be used. When cutting to a required length or width use a sharp blade – preferable carbide tipped. Very aggressive blades with very few teeth may leave some rough edges. Do not use fine tooth blades. Rather, use blades with a medium number of teeth.

Fastening

Century Trim™ products may be fastened with nails, screws and glues. Hot dipped galvanized or stainless steel fasteners are recommended. Do not use ring shank nails or fine threaded screws. When air and material temperature is under 40°F, pre-drilling is required.

Ship Lap or Square End Boards

All **Century Trim™** Boards are available with Ship Lap Both Ends or Square Ends. When joining long runs end to end, nail or fasten through the ship laps on both boards. This will minimize expansion and contraction of both boards.

Painting

Although **Century Trim™** does not require painting, it can be painted without any particular surface preparation. However, make sure all products are clean and dry before painting. If paint is applied, 100% latex or 100% acrylic latex exterior paint - with a urethane additive – is recommended. As always, follow the paint manufacturers instructions and technical details. **Century Trim™** can be painted any color but remember dark colors absorb heat and can cause more product expansion than painting with medium or light colors.

